





**3BHK + 2T**  
1164 sq.ft

**2BHK + 2T**  
999 sq.ft

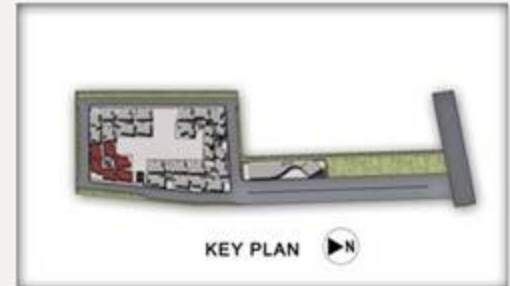
**2BHK + 2T**  
999 sq.ft

**2BHK + 2T**  
999 sq.ft

**2BHK + 2T**  
999 sq.ft

**2.5BHK + 2T**  
1159 sq.ft

**BLOCK - 5**



3BHK + 3T  
1324 sq.ft

3BHK + 2T  
1224 sq.ft



3BHK + 3T  
1320 sq.ft

3BHK + 3T  
1325 sq.ft

**BLOCK - 1**



3BHK + 3T  
1324 sq.ft



3BHK + 2T  
1259 sq.ft

3BHK + 2T  
1259 sq.ft

3BHK + 2T  
1242 sq.ft

**BLOCK - 3**



**2BHK Compact**  
646 sq.ft

**2BHK Compact**  
646 sq.ft

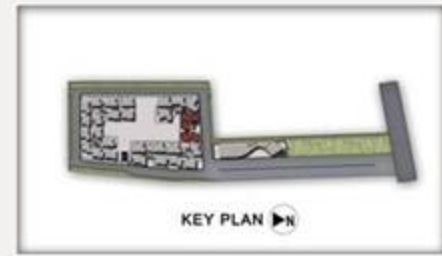
**2BHK Compact**  
646 sq.ft

**2BHK Compact**  
646 sq.ft

**2BHK Compact**  
646 sq.ft



**BLOCK - 2**



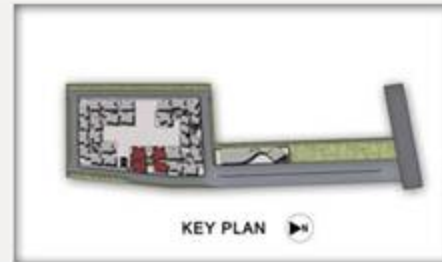
3BHK + 3T  
1324 sq.ft

3BHK + 3T  
1312 sq.ft



3BHK + 2T  
1259 sq.ft

3BHK + 2T  
1232 sq.ft



**BLOCK - 4**

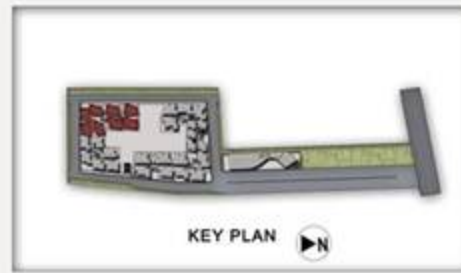


**2BHK + 2T**  
999 sq.ft

**3BHK + 2T**  
1232 sq.ft

**3BHK + 2T**  
1232 sq.ft

**BLOCK - 6**

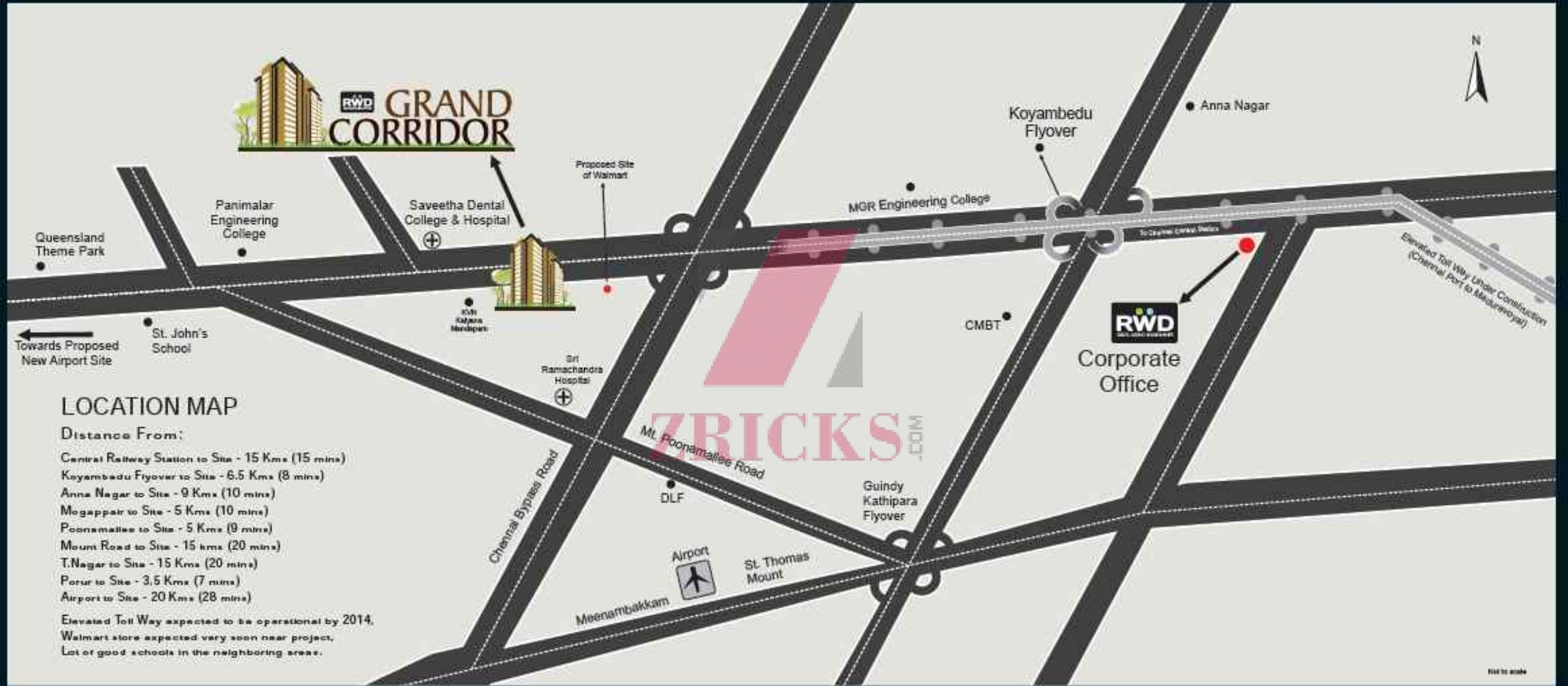






**ZRICKS** PVT. LTD.

# Site Plan



### LOCATION MAP

- Distance From:
- Central Railway Station to Site - 15 Kms (15 mins)
  - Koyambedu Flyover to Site - 6.5 Kms (8 mins)
  - Anna Nagar to Site - 9 Kms (10 mins)
  - Mogappair to Site - 5 Kms (10 mins)
  - Poonamallee to Site - 5 Kms (9 mins)
  - Mount Road to Site - 15 kms (20 mins)
  - T.Nagar to Site - 15 Kms (20 mins)
  - Porur to Site - 3.5 Kms (7 mins)
  - Airport to Site - 20 Kms (28 mins)
- Elevated Toll Way expected to be operational by 2014.  
Walmart store expected very soon near project.  
Lot of good schools in the neighboring areas.